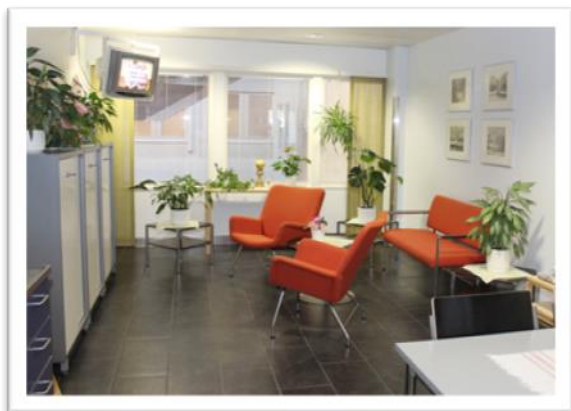
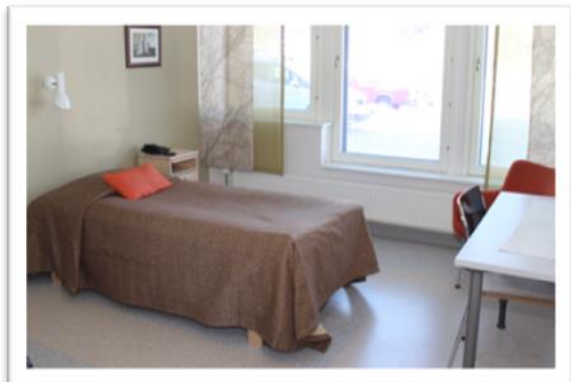


# WELCOME to Lapland Central Hospital Patients Hotel



Ounasrinteentie 22  
1.Floor  
96400 ROVANIEMI

tel: +358 (0)16 328 6112

## RECEPTION

1. Floor  
Tel. +358 (0)16 328 6112

### Opening hours

Monday to Friday from 7 am to 19 pm  
In other times call security tel: +358 (0)16 320 2500

### Hotel equipped

Double rooms with TV, fridge, WC and shower.

In the entrance hall (2<sup>nd</sup> floor): patients office,  
information, cafeteria.

You can rent a heated parking place from  
the information.

### Meals

Room price includes breakfast. Lunch and dinner  
you could buy in staff restaurant Karpalo (0. floor).

<b>Breakfast</b>	<b>7.00–9.30</b>
<b>Lunch</b>	<b>10.30–13.30</b>
<b>Dinner</b>	<b>16.00–17.00</b>

## HOTEL RULES

Hotel operates with self-service principles:

**Smoking and alcoholic beverages are prohibited in the rooms and hotel area.**  
**Pets not allowed in the hospital building.**

Please return your key to the reception  
at your departure. Check out time 12.00AM.  
For not returned keys we have to charge 25€.

### Room price:

58,00 € / Person / Night (Children under 2 free)  
101,80 € / Family

### Payment:

Payment through your bank with bank transfer.  
Or by cash, bank card, Visa Electron or  
Visa/Mastercard at the Cafeteria Kaarnikka on  
the 2<sup>nd</sup> floor.



LAPIN SAIRAANHOITOPIIRI  
LAPLAND HOSPITAL DISTRICT

28.8.2019